



INDOFINE Chemical Company, Inc.

121 Stryker Lane, Bldg. 30, Suite 1 • Hillsborough, NJ 08844 • U.S.A.

Phone: (908) 359-6778 • FAX: (908) 359-1179

website: www.indofinechemical.com

e-mail: chemical@indofinechemical.com

CERTIFICATE OF ANALYSIS

Catalog Number: 06-1233

Product Name: SWEROSIDE

CAS Number: [14215-86-2]

Lot Number: 2004423

Chemical Formula: C₁₆H₂₂O₉

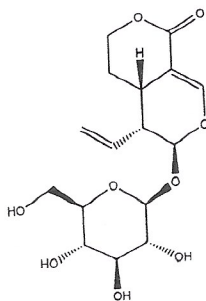
Molecular Weight: 358.34

Appearance: Off-white powder

Loss on drying: 1.6%

Storage: Store at 2-8°C. Protect from light.

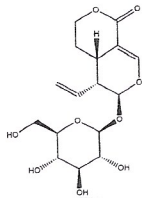
Purity(HPLC): 99.43%



Prepared by:
Ramesh Mandadi
Ramesh Mandadi
Director of Operations

Reviewed and Approved by
Sujata Moton
Sujata Moton
VP

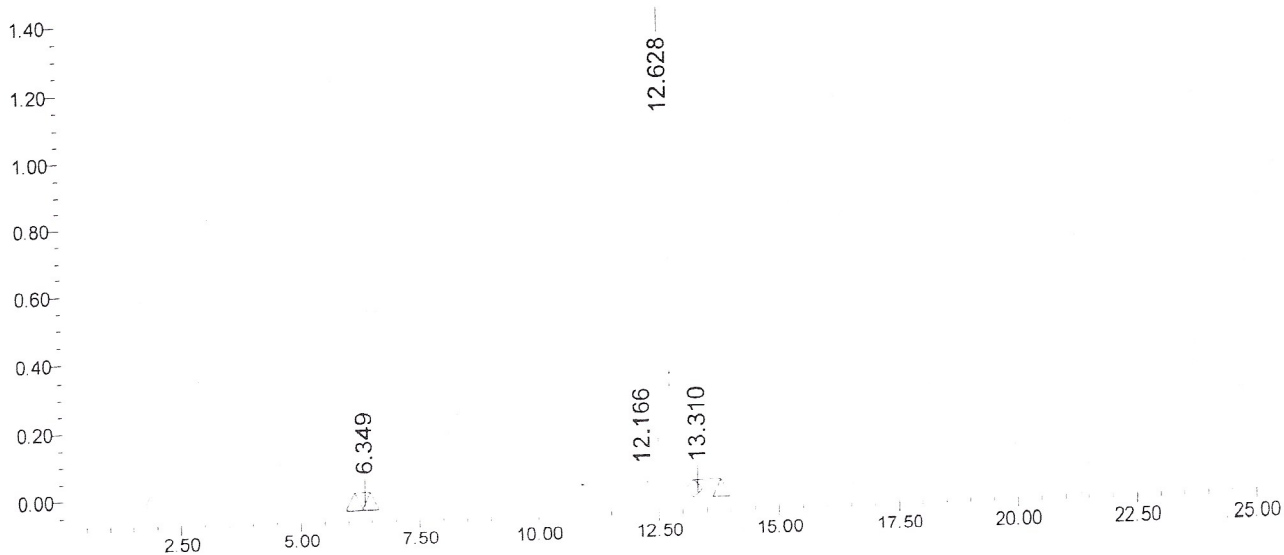
HPLC ANALYSIS



Catalog No.: 06-1233
 Product Name: Sweroside
 Lot No.: 2004423

SAMPLE INFORMATION			
Sample Name:	Sweroside	Acquired By:	prf01
Sample Type:		Sample Set Name:	
Vial:	3	Acq. Method Set:	Sweroside
Injection #:	1	Processing Method:	sample
Injection Volume:	10.00 ul	Channel Name:	245.0
Run Time:	25.0 Minutes	Proc. Chnl. Descr.:	PDA 245.0

Auto-Scaled Chromatogram



Peak Results

	RT	Area	% Area	USP	USP
1	6.349	10305	0.07	1055	9772.31
2	12.166	43555	0.31	3936	21.21
3	12.628	13759404	99.43	1369523	1.71
4	13.310	25470	0.18	1819	2.57

Prepared by:
Ramesh Mandadi
 Ramesh Mandadi
 Director of Operations

Reviewed and Approved by
Sujata Moton
 Sujata Moton
 VP